

Tudor

syrfewyr siartredig | gwerthwyr eiddo | rheolwyr meddiannau
chartered surveyors | estate agents | property managers



Garreglwyd, Cilan, LL53 7DB

£700,000

- Grade II Traditional Welsh Cottage
- Breathtaking Views
- Barn Offering Great Potential
- Spectacular Elevated Position
- Open Plan Living with Crog Loft
- Set Within 14.87 Acres



Garreglwyd, Cilan, LL53 7DB

Tudor Estate Agents & Chartered Surveyors are favoured with instructions to offer for sale this Grade II Listed traditional welsh cottage, dating back to the 18th century, with 14.87 Acres or thereabouts, barn offering great potential, located in a spectacular rural area on Cilan Headland which is only a few miles from Abersoch and enjoys truly amazing panoramic sea and countryside views towards Porth Neigwl (Hells Mouth) and across to Abersoch.

This is a rare opportunity to purchase this quaint cottage in probably one of the best locations on the Llyn Peninsula. An inspection is highly recommended to appreciate the potential and opportunity this special property provides. The property has the benefit of the following: -

COTTAGE

Open Plan Lounge/Kitchen/Diner 21'9 x 13'11 (6.63m x 4.24m)

Crog Loft 8'6 x 13'11 (2.59m x 4.24m)

Shower Room 6'4 x 5'4 (1.93m x 1.63m)

BARN

Workshop 26'1 x 13'2 (7.95m x 4.01m)

Loft 26'1 x 13'3 (7.95m x 4.04m)

Garage 11'7 x 13'5 (3.53m x 4.09m)

SERVICES

We understand that mains water and electricity are connected to the property. Private drainage. Prospective purchasers should make their own enquiries as to the suitability and adequacy of these services.

TENURE

We understand that the property is freehold with vacant possession available on completion.



Tudor

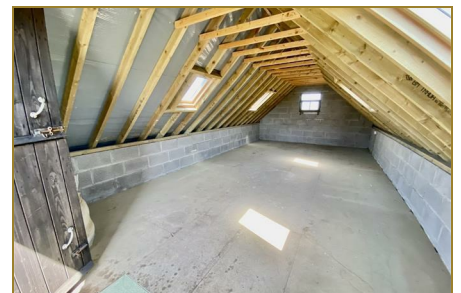
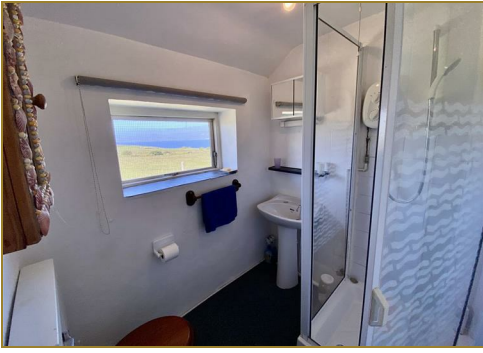
Plas Y Ward, Y Maes, Pwllheli, Gwynedd, LL53 5DA

T: 01758 701 100

E: info@huwtudor.co.uk

www.huwtudor.co.uk

Garreglwyd, Cilan, LL53 7DB



Tudor

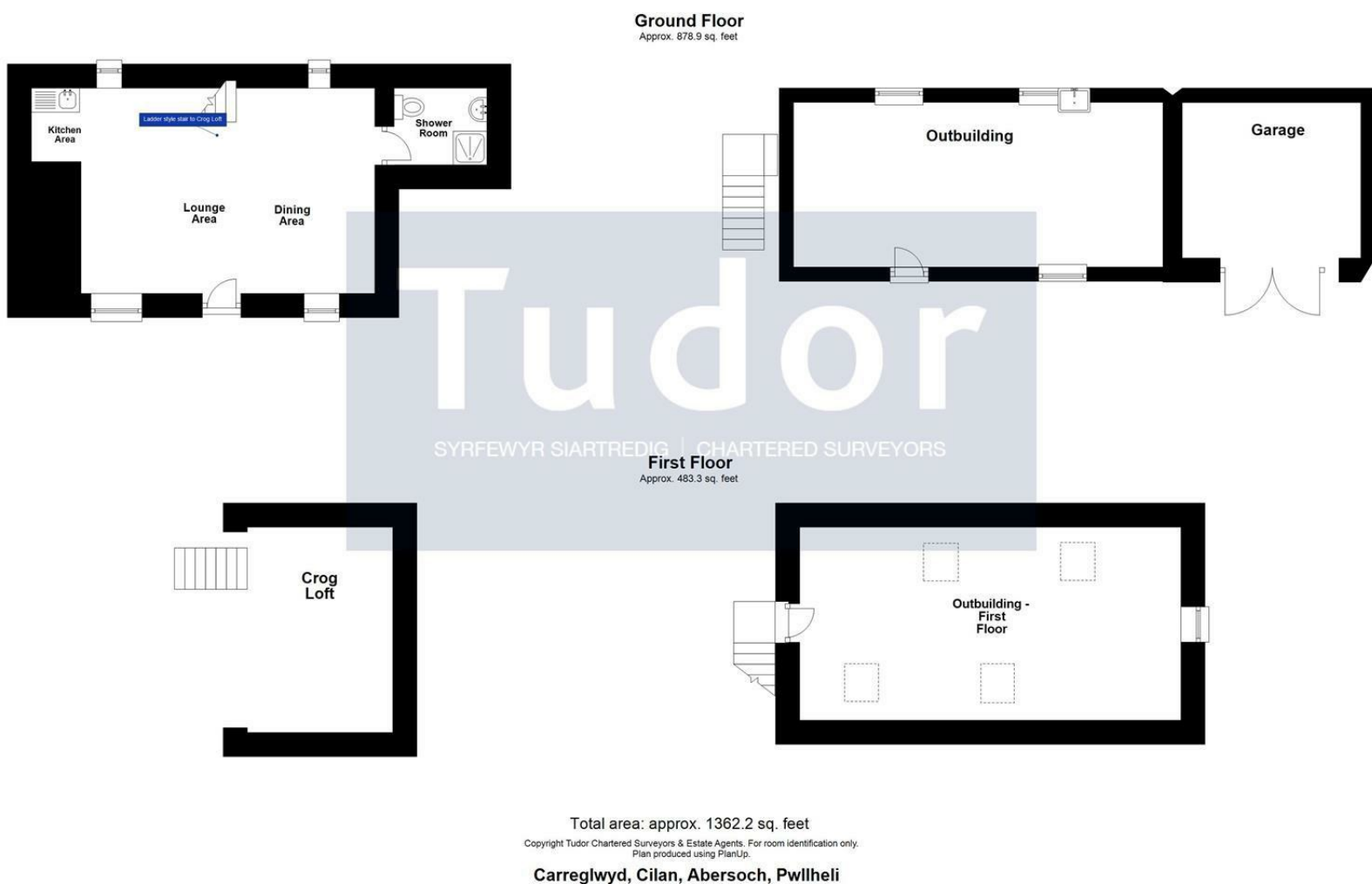
Plas Y Ward, Y Maes, Pwllheli, Gwynedd, LL53 5DA

T: 01758 701 100

E: info@huwtudor.co.uk

www.huwtudor.co.uk

Garreglwyd, Cilan, LL53 7DB



From Pwllheli proceed west on the A499 in the direction of Abersoch. Enter Abersoch and proceed around the one way system and then straight on to Sarn Bach. Pass through Sarn Bach and then onwards to Cilan. Pass the converted chapel at Cilan (on the right) and then take the right fork in the road and proceed along the lane, over the cattle grid and enter the National Trust Mynydd Cilan land. Proceed straight on on the track. Pass the little white cottage on your right and then proceed straight on, down the hill passing a little cottage on the left and then the entrance to Garreglwyd is then straight ahead. (Please note that your sat nav reference is based on the postcode which, in a rural area, can cover a large geographic area. Please follow the directional note for the latter part of your journey).



Tudor

Plas Y Ward, Y Maes, Pwllheli, Gwynedd, LL53 5DA

T: 01758 701 100

E: info@huwtudor.co.uk

www.huwtudor.co.uk